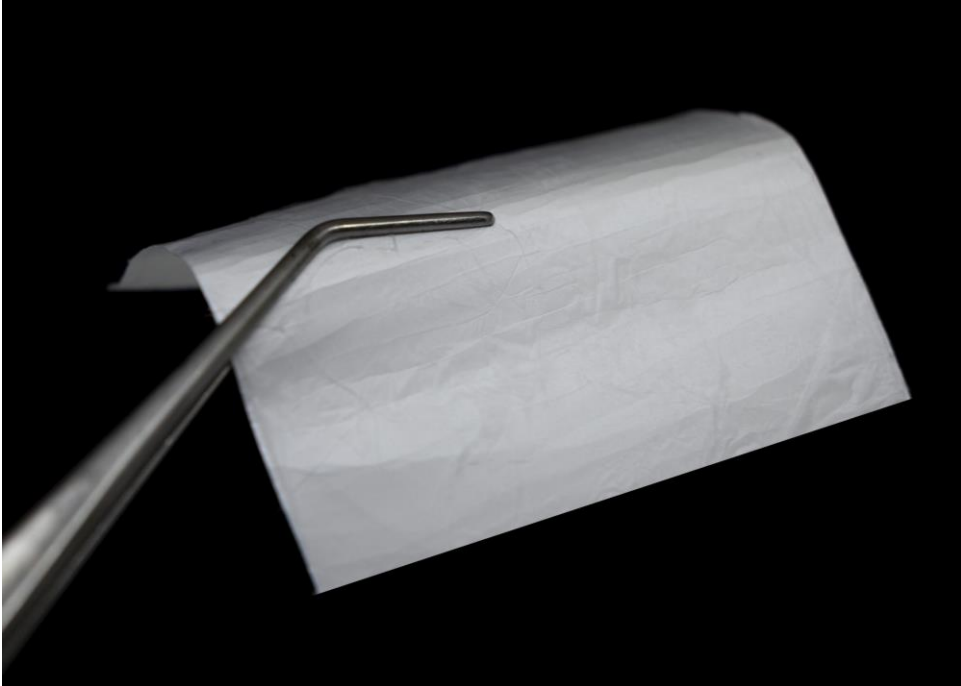


Biodegradable membranes



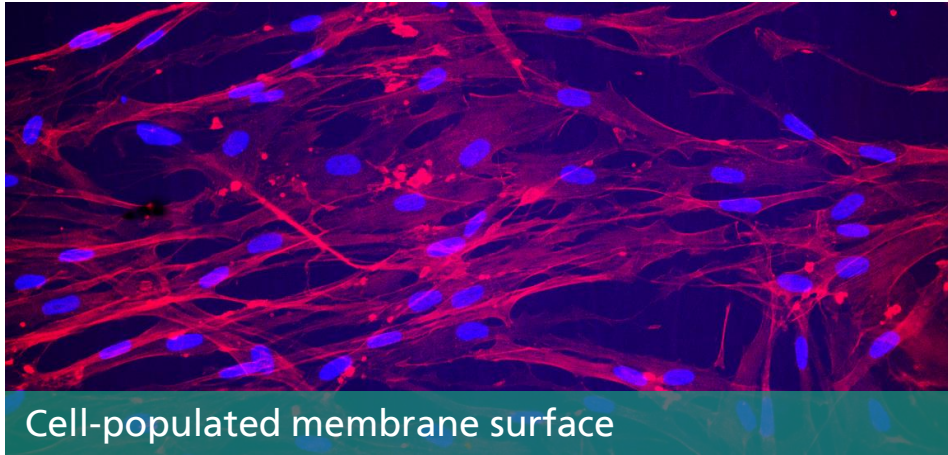
BIODEGRADABLE FIBER REINFORCED MEMBRANES FOR MEDICAL APPLICATIONS

The Fraunhofer ISC is developing **flexible resorbable membranes** that can also be customized in terms of transparency or porosity for nutrient transport.

These resorbable membranes are suitable, for example, as **cell substrates in tissue engineering** or as **implantable adhesion barriers** that prevent postoperative adhesions.

They can also be used as planar, biodegradable substrates for **biodegradable, electronic implants and sensors** and, for example, enable the actual construction or encapsulation of the electronic device.

Versatile application areas



SERVICES

- Customized material development
- Biodegradability
- Porous (nutrient diffusion) and non-porous solutions
- Planar surfaces
- Flexibility
- Transparent and non-transparent solutions

APPLICATIONS

- Substrate for biodegradable sensor technology
- Substrate for biodegradable electronics
- Adhesion barrier to avoid postoperative adhesions
- Implantable scaffold

Your Contact



**Head of Business Unit
Dr. Jörn Probst**

joern.probst@isc.fraunhofer.de

Phone: +49 931 4100-300



**Project leader
Dr. Bastian Christ**

bastian.christ@isc.fraunhofer.de

Phone: +49 931 4100-596

Fraunhofer Institute for Silicate Research ISC

Business Unit Biomaterials | Translational Center Regenerative Therapies TLC-RT

Neunerplatz 2 | 97082 Würzburg | Germany | www.regenerative-therapien.fraunhofer.de